

A world map in shades of blue and green. Two glowing yellow-orange spheres are positioned over North America and Europe, connected by a thin, curved white line. The text 'B.A.E.F.' is centered over the map.

B.A.E.F.

Belgian American Educational Foundation Inc.

A LONG HISTORY...



WWI



From Flour



To Education!



THE FIRST FELLOWS

24 C.R.B. FELLOWS IN 1920



WHO ARE WE?

- Independent philanthropic organization
- Promotes higher education for Belgians and Americans
- Scholarship program for excellence in the partner country
 - For students
 - For researchers
 - Between \$35,000 and \$112,000

KEY FIGURES



Since 104 years



5235 Fellows since 1920



From all disciplines



70 fellowships per year



FELLOWSHIPS FOR GRADUATE STUDY

- ❖ INITIAL MASTER
- ❖ COMPLEMENTARY MASTER
- ❖ LL.M.
- ❖ FIRST YEAR PHD
- ❖ MBA

WHAT DO WE OFFER?

- Non-renewable grant
- Logistic support of our office
- Join our alumni and our network





SCHOLARSHIPS

	Tuition (to university)	Stipend (to you)	
Initial Master's	\$90,000	\$22,000	For 2 years
Complementary Master's	\$50,000	\$22,000	
First year of PhD	\$50,000	\$22,000	
LLM	\$50,000	-	
MBA	\$100,000	-	For 2 years. 1/2 outright grant 1/2 interest-free loan

REQUIREMENTS



- Belgian nationality



- Have an outstanding academic record



- Have a good command of English (check whether the US university requires the TOEFL/IELTS)



- Check whether the US University requires the GRE or GMAT results

REQUIREMENTS



- Year in which you obtained your bachelor's degree

To spend the 2025-2026 academic year in the US

Initial Master's	Bachelor after January 2024
------------------	-----------------------------

Complementary Master's	Bachelor after January 2022
------------------------	-----------------------------

LLM	Bachelor after January 2021
-----	-----------------------------

First year of PhD	Bachelor after January 2021
-------------------	-----------------------------



FELLOWSHIPS FOR RESEARCH

❖ MASTER'S LEVEL RESEARCH

❖ DOCTORAL RESEARCH

❖ POST-DOCTORAL RESEARCH

WHAT DO WE OFFER?

- Non-renewable grant for 12 months
- Health insurance
- Logistic support of our office
- Join our alumni and our network





SCHOLARSHIPS

Stipend for 12 months

Master's level research

\$35,000

Doctoral research

\$35,000

Post-doctoral research

\$55,000

REQUIREMENTS



- Belgian nationality



- Affiliated to a Belgian university / PhD completed at a Belgian university



- An official invitation letter from a US university or research center

REQUIREMENTS



- Year in which you obtained your Bachelor's degree or PhD

To spend the 2025-2026 academic year in the US

Master's level research

Apply during the last year of bachelor's studies or first year of master's studies

Doctoral research

Have started your PhD after July 2023

Post-doctoral research

Have obtained your PhD after July 2023

HOW TO FIND A HOST INSTITUTION?



- Use your [network](#) (professors, friends,...)
- Search and contact [authors](#) who are in the U.S. in your research field
- Check out [BAEF's alumni](#) on our website
- Don't be shy.... you have nothing to lose! ;)

FELLOWSHIPS FOR MUSIC

- ❖ BACHELOR
- ❖ INITIAL MASTER
- ❖ COMPLEMENTARY MASTER

WHAT DO WE OFFER?



- Non-renewable grant
- Tuitions (\$40,000)
- Stipend (\$22,000)
- Logistic support of our office
- Join our alumni and our network

REQUIREMENTS



- Belgian nationality



- Obtained your bachelor's degree (if any) after January 2021



- Have an outstanding academic record



- Have a good command of English (check whether the US university requires the TOEFL/IELTS))

HOW TO APPLY

Three simultaneous
actions: start early!

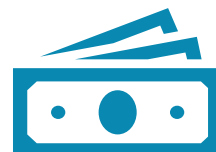
STUDENTS



Apply to a minimum of 3
US universities (5-8
recommended)



Determine which tests
are needed to apply &
take them (TOEFL/IELTS -
GRE/GMAT)



Look for financial support (BAEF, Fulbright,
Fernand Lazard Foundation, etc...)

RESEARCHERS



Contact various US
universities or research
centers



Choose the best one and
ask a letter of invitation

HOW TO APPLY TO BAEF

First step:

Pre-eligibility form



- Go to www.baef.be
 - Fill out the pre-eligibility form
 - A confirmation email will be sent
 - From the end of august, you will receive a link to complete your online application

HOW TO APPLY

Second step:

Online application

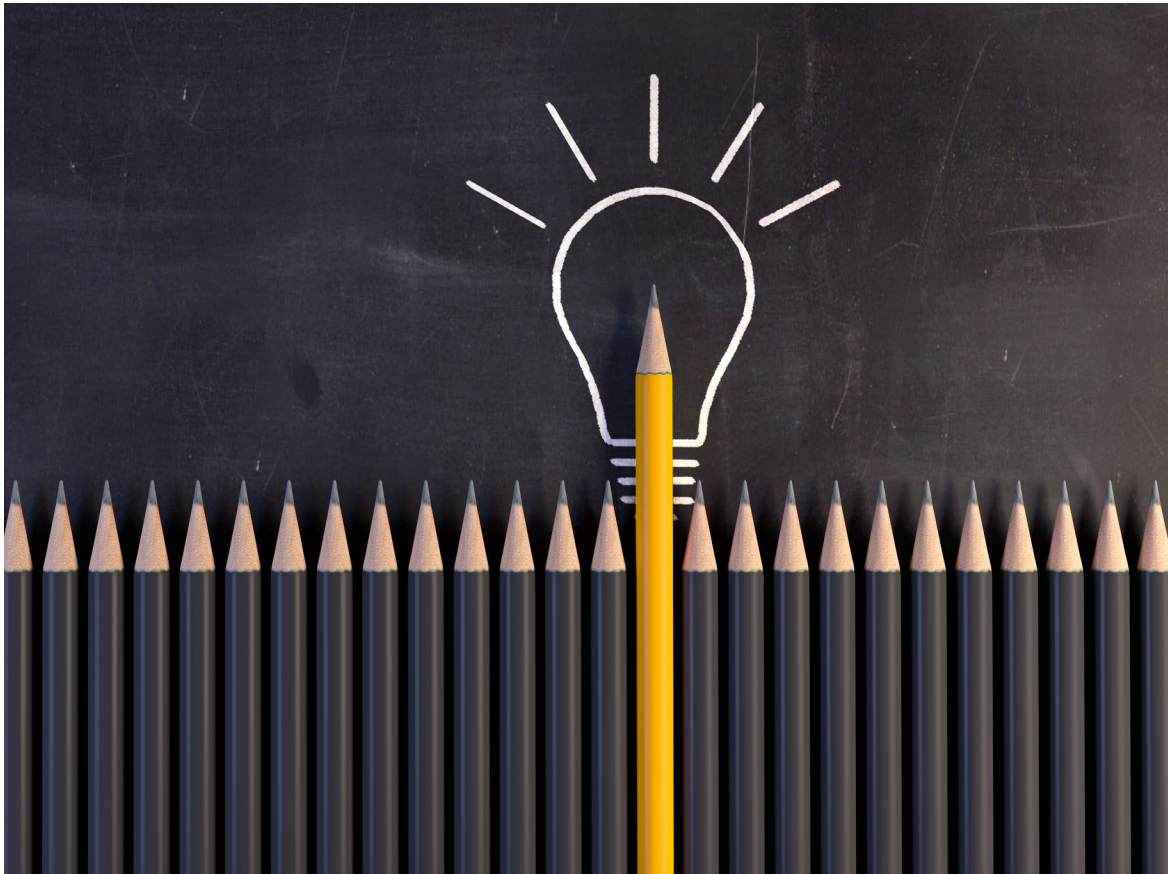


- **Online Application file:**
 - Personal and educational background
 - A brief autobiography in narrative prose (one page)
 - A carefully prepared statement of purpose
 - Why do you want to study/conduct research in the US?
 - What are your study/research plans?
 - What benefits do you expect to gain from your stay in the US?
 - 3 recommendation letters (November 15th)
 - For researcher : invitation letter (November 15th)

DECISION PROCESS



TIPS AND TRICKS



- **Timing** is everything!
- Don't hesitate to **ask questions** (your professors, university international office, your friends, BAEF's office, ...)
- **Letters of recommendation**: personalized, detailed and diverse. Follow them up.
- **Interviews**: Learn how to pitch your project simply and clearly (check whether your university organizes mock interviews).

BAEF BELGIAN FELLOWS 2024 & US FELLOWS 2023

BRUSSELS, MAY 31, 2024



Be Fellows 2024-2025 & US Fellows 2023-2024 © Guy Philippart



Eloïse de Villegas

Program Manager

Rue d'Egmont, 11, Egmontstraat

1000 Brussels

Marie-Claude Hayoit

Program Manager

Tel: (02) 513.59.55

E-mail: mail@baef.be

Website: <http://www.baef.be>